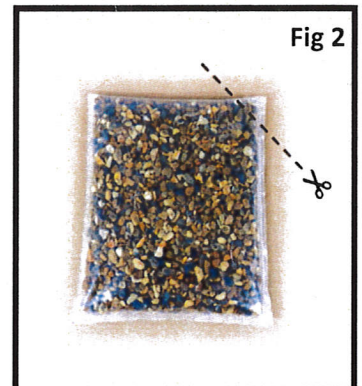
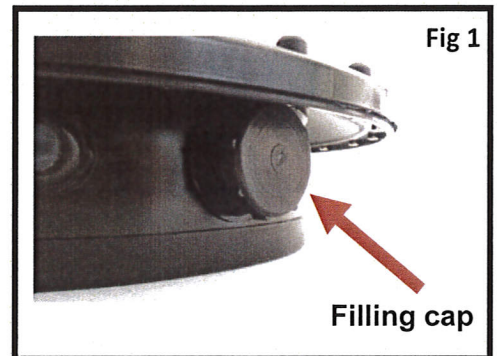


Free Standing Air Diffuser



How to weight your air diffuser?

To weight your air diffuser you have to first remove the filling cap (Fig 1) to do this unscrews the cap anti-clockwise. The cap is located on the side of the base, after doing this cut both the supplied bags of gravel (Fig 2) we recommend you cut the bags of gravel like this because it will aid pouring the gravel into the base of the air diffuser. Once both bags are cut you can begin to fill your base with gravel, once the content of both bags have been poured in the air diffuser base you are now ready to screw the filling cap back on. When putting the cap on to the base, make sure you are turning it in a clockwise direction and only tightening it up hand tight. Finally make sure the gravel in side is level, do this by gently shaking your air diffuser from side to side, this will allow your gravel to be evenly spread in the base and there for sit better on the bottom of your pond. Your air diffuser dome is now ready for use.



Installing the air diffuser into your pond

Due to the unit being free standing it will allow you to place it in any suitable position in your pond. When you begin to run your air diffuser make sure to run it at low pressure for 2 hours, this will give the rubber membrane time to adjust to the water temperature.

MAINTENANCE OF YOUR AIR DIFFUSER

Increasing the air pressure for a short time (possibly) once a month will clear the perforations, you can also attach a long handled nylon brush which can be cable tied to a pole to clean the top of the membrane if necessary.

TO MAINTAIN THE LIFE OF YOUR AIRDOME DO NOT EXCEED 10LTS OF AIR

THIS SHOULD GIVE YOU SUFFICIENT OXYGENATION AND MOVEMENT OF WATER
TURN TO ABOUT 15LTS OF AIR TO CLEAN MEMBRANE ON A MONTHLY BASIS